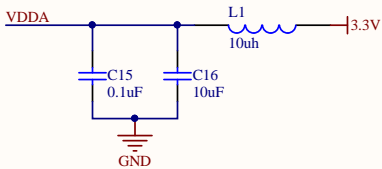
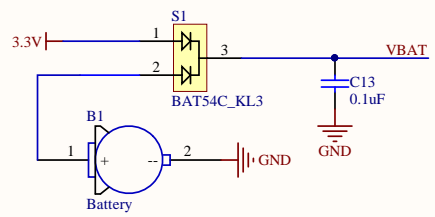
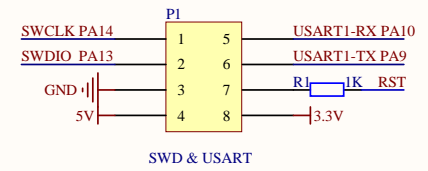


STM32F407VET6

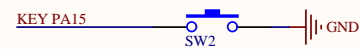
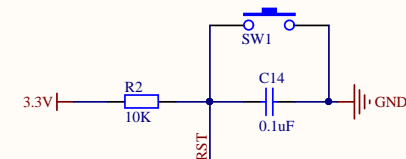
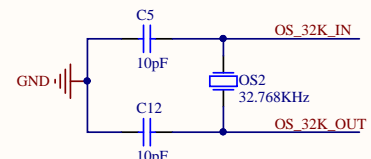
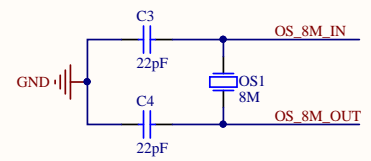


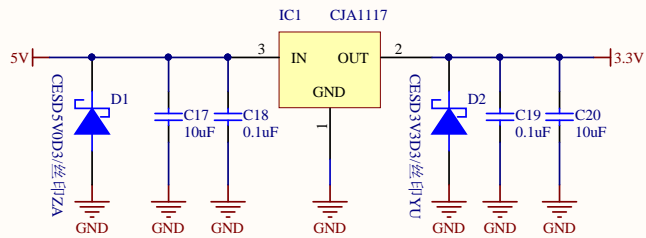
STM32F407VET6



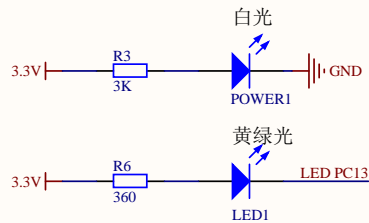
SWD接口

USART1接口

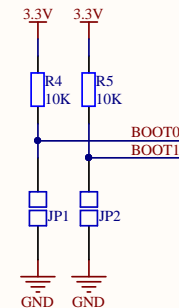




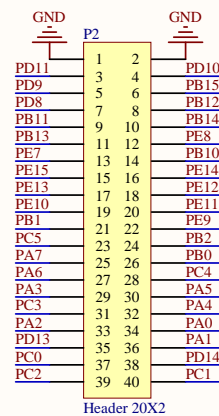
电源电路, 3.3V稳压



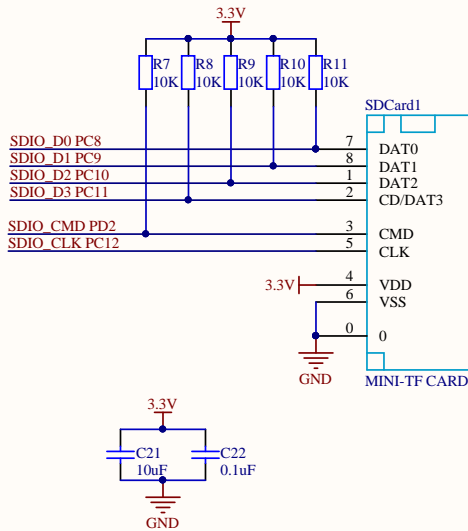
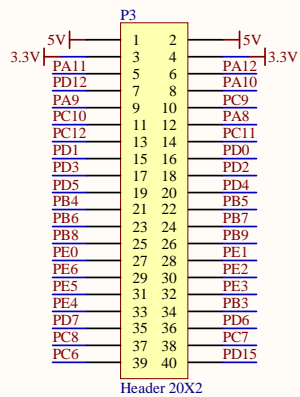
LED电路



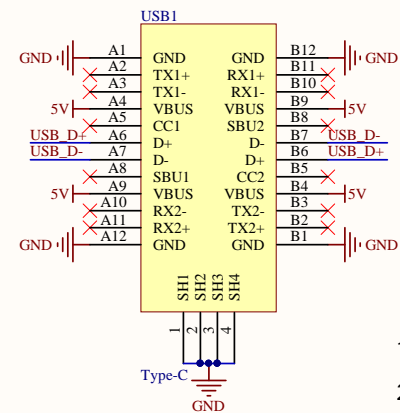
1. BOOT通过焊点的形式引出，默认拉高
2. 可在PCB背部使用烙铁修改相应的焊点



通过排针引出IO口



miniTF卡座



Type C接口

- 1.可用于对核心板供电
- 2.连接到STM32的USB口

图纸：FK407M1核心板原理图

设计：反客科技

版本：V1.0

时间：2018-5-3